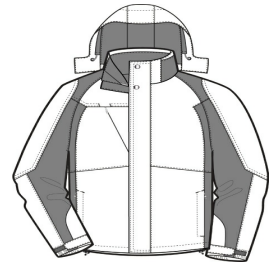


## Port Authority® Ranger 3-in-1 Jacket J310

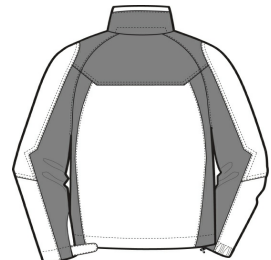


This jacket offers three great layers for one great price. The plush microfleece jacket is perfect on cool days; the critically seam-sealed, waterproof shell on rainy days; or combine the two for more protection.

- 100% polyester shell with PU coating
- 100% polyester lining
- 3000MM fabric waterproof rating
- Critically seam-sealed for added waterproof protection
- 3000G/M<sup>2</sup> fabric breathability rating
- Detachable hood with adjustable self-fabric tab, drawcord and toggles
- Storm flap with hook and loop closures and chin guard
- Two-way zipper
- Angled zippered chest pocket
- Front zippered pockets
- Half elastic, half self-fabric adjustable tab cuffs with hook and loop closures
- Port Pocket™ for easy embroidery access
- 100% polyester microfleece inner jacket has an anti-pill finish and open cuffs with spandex binding
- Open hem with drawcord and toggles



front



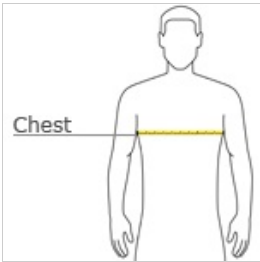
back

### CARE INSTRUCTIONS

Machine wash cold on gentle cycle with like colors. Use mild detergent. Remove immediately. Do not allow to lay on itself when wet. Tumble dry low. Cool iron if needed. Do not dry clean.

[Tips For Effectively Screen Printing Polyester Fabrics](#)

### HOW TO MEASURE



**CHEST**  
With arms down at sides, measure around the upper body, under arms and over the fullest part of the chest.

### SIZE CHART

	XS	S	M	L	XL	2XL	3XL	4XL
Chest Size (inches)	32-34	35-37	38-40	41-43	44-46	47-49	50-53	54-57

### COLOR INFORMATION



Black/Ink Grey  
PMS BLACK C



Dark Cadmium  
Orange/Shadow  
PMS 7580 C



Insignia  
Blue/Navy Eclipse  
PMS 7546 C

